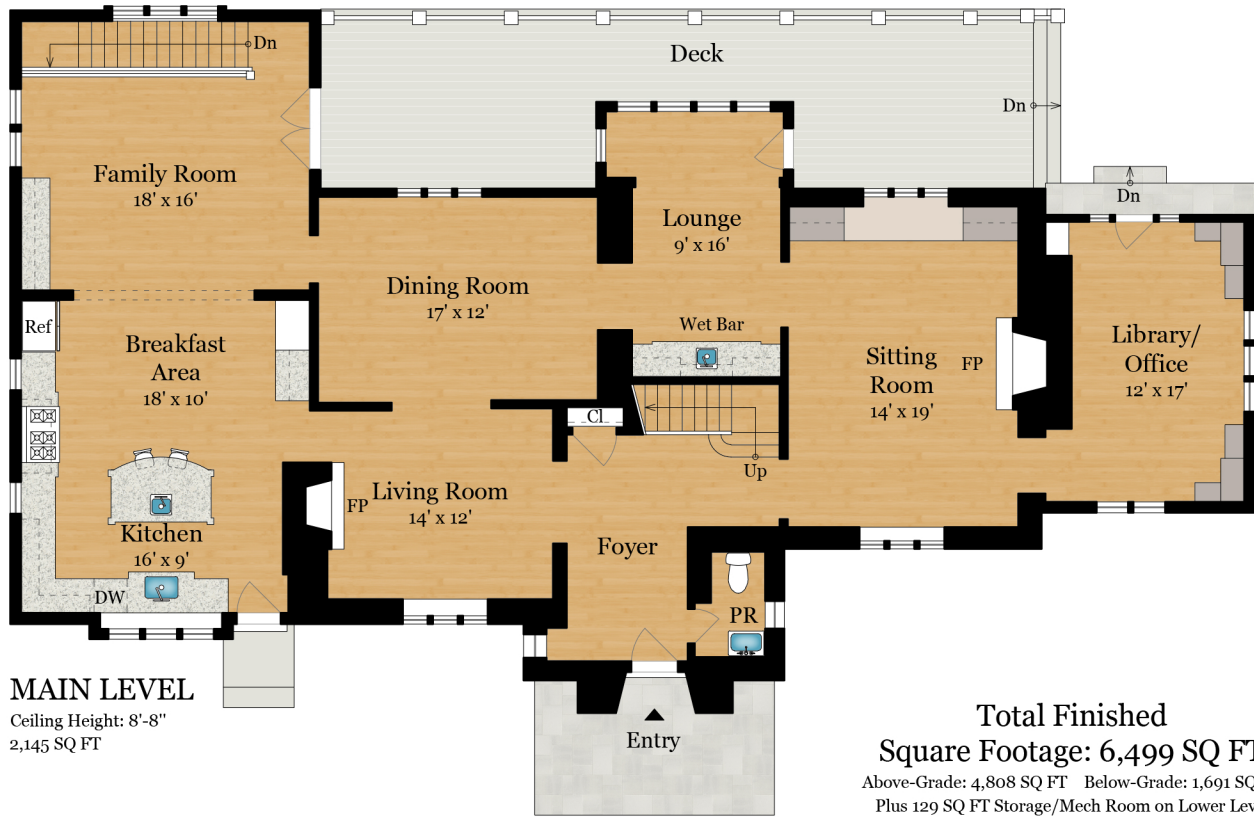


# 4921 QUEBEC STREET, NW

WASHINGTON, DC 20016



## MAIN LEVEL

Ceiling Height: 8'-8"  
2,145 SQ FT

## Total Finished Square Footage: 6,499 SQ FT

Above-Grade: 4,808 SQ FT Below-Grade: 1,691 SQ FT  
Plus 129 SQ FT Storage/Mech Room on Lower Level  
Plus 21 SQ FT Attic Mech Room on Upper Level 1  
Plus 115 SQ FT Attic Mech Room on Upper Level 2  
Plus 86 SQ FT Room (*Low ceiling*)  
Calculated per ANSI Standard Z765-2003.

\* Total Finished & Unfinished Square Footage: 6,850 SQ FT



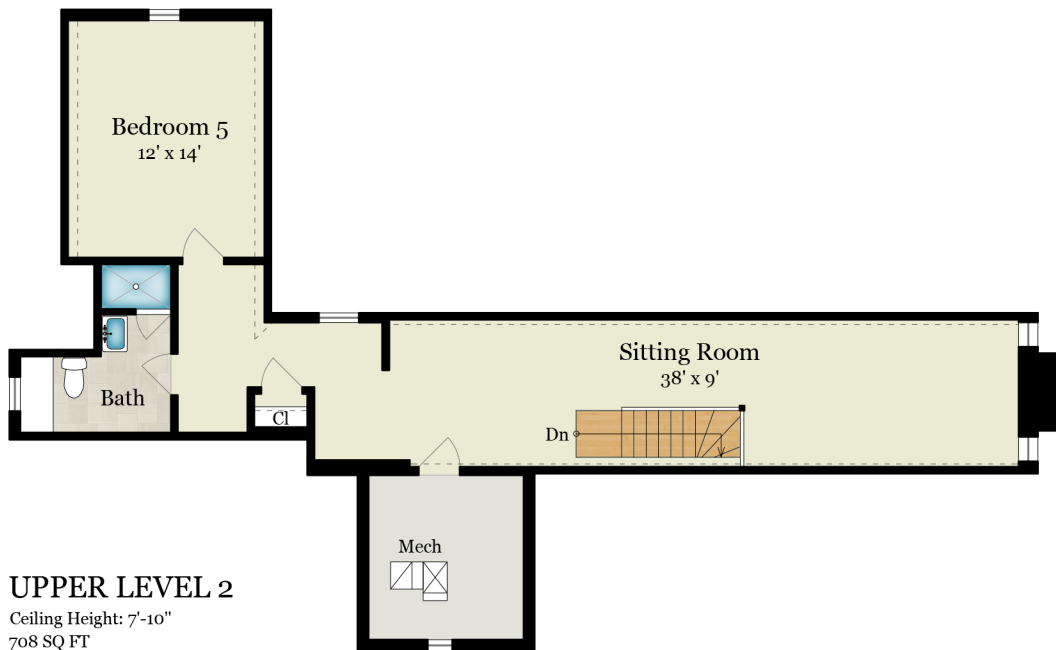
## UPPER LEVEL 1

Ceiling Height: 8'-4"  
1,955 SQ FT



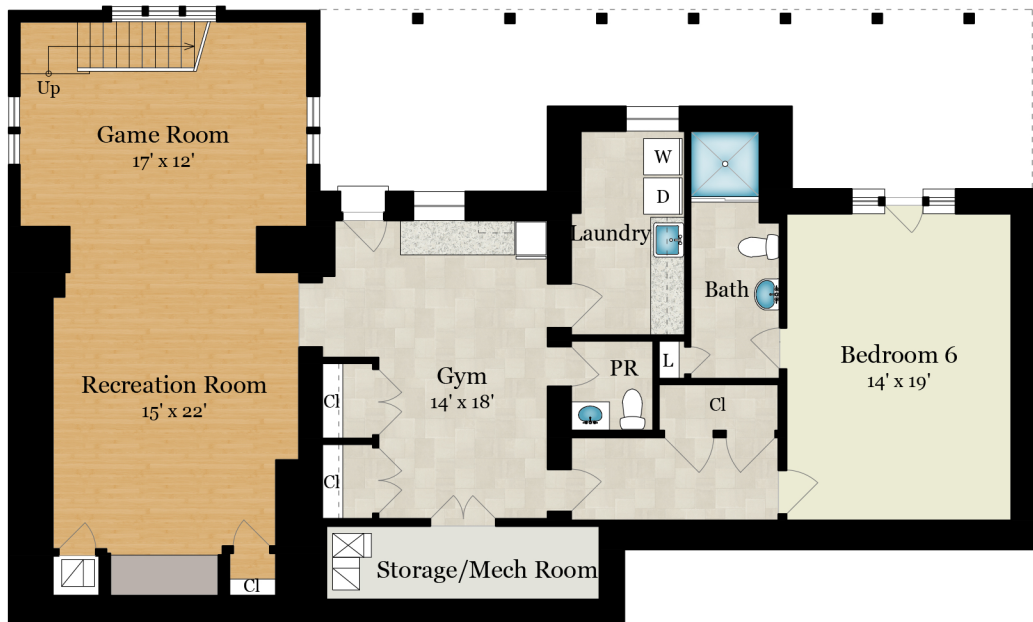
# 4921 QUEBEC STREET, NW

WASHINGTON, DC 20016



## UPPER LEVEL 2

Ceiling Height: 7'-10"  
708 SQ FT



## LOWER LEVEL

Ceiling Height: 7'-8"  
1,691 SQ FT



# 4921 QUEBEC STREET, NW

WASHINGTON, DC 20016



SITE PLAN

